

**FOR LEASE
RETAIL SPACE
NEAR
DOWNTOWN
MARYSVILLE**



**729 'E' Street
Marysville, CA**

Offered at \$1,750.00/month NNN

- 1,036 sq. ft.—Former Bank Branch
- Signaled corner on Highway 20/70 - E Street
- Ample on and off street parking
- Perfect for Retail or Office use
- Wired for computers, security, cameras
- Owner willing to do alterations/improvements

FOR FURTHER INFORMATION CONTACT:

Meagher & Tomlinson
1007 Live Oak Blvd
Yuba City, CA 95991
(530) 671-0000
(530) 671-2717

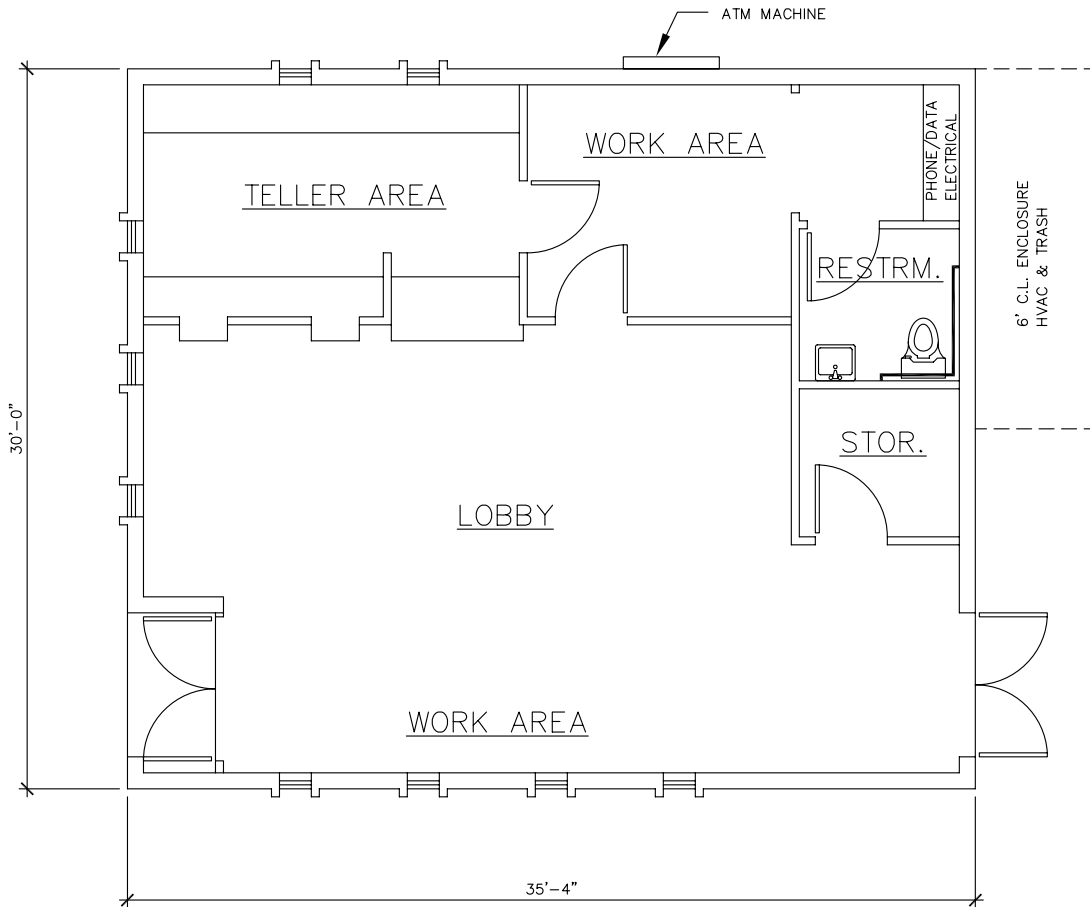
www.wmmt.com

KAREN TABLER

CELL: 713-0243

karent@wmmt.com

CA DRE Broker Lic 00886618



FLOOR PLAN

1,036 S.F.



GRAPHIC SCALE

DNC DENNIS C. NELSON
 COMPANY
 LAND USE PLANNING, BUILDING DESIGN
 AND CONSTRUCTION MANAGEMENT
 950 Tharp Road, Suite 501
 Yuba City, CA 95993
 Bus: (530) 674-7501 Fax: (530) 674-7503

OVERALL BUILDING LAYOUT: _____
 729 E STREET (STATE HWY. 70)
 MARYSVILLE, CA 95901 APN. 010-115-030

