

**PRIME
SPACE
FOR LEASE**



7,100 s.f. Office Building

**430 Center Street
Yuba City, CA**

\$0.95 psf/mg

For more information contact:

Bill Meagher

(530) 671-0000

Meagher &
Tomlinson
1007 Live Oak
Blvd
Yuba City, CA
95991
(530) 671-0000
F(530) 671-2717

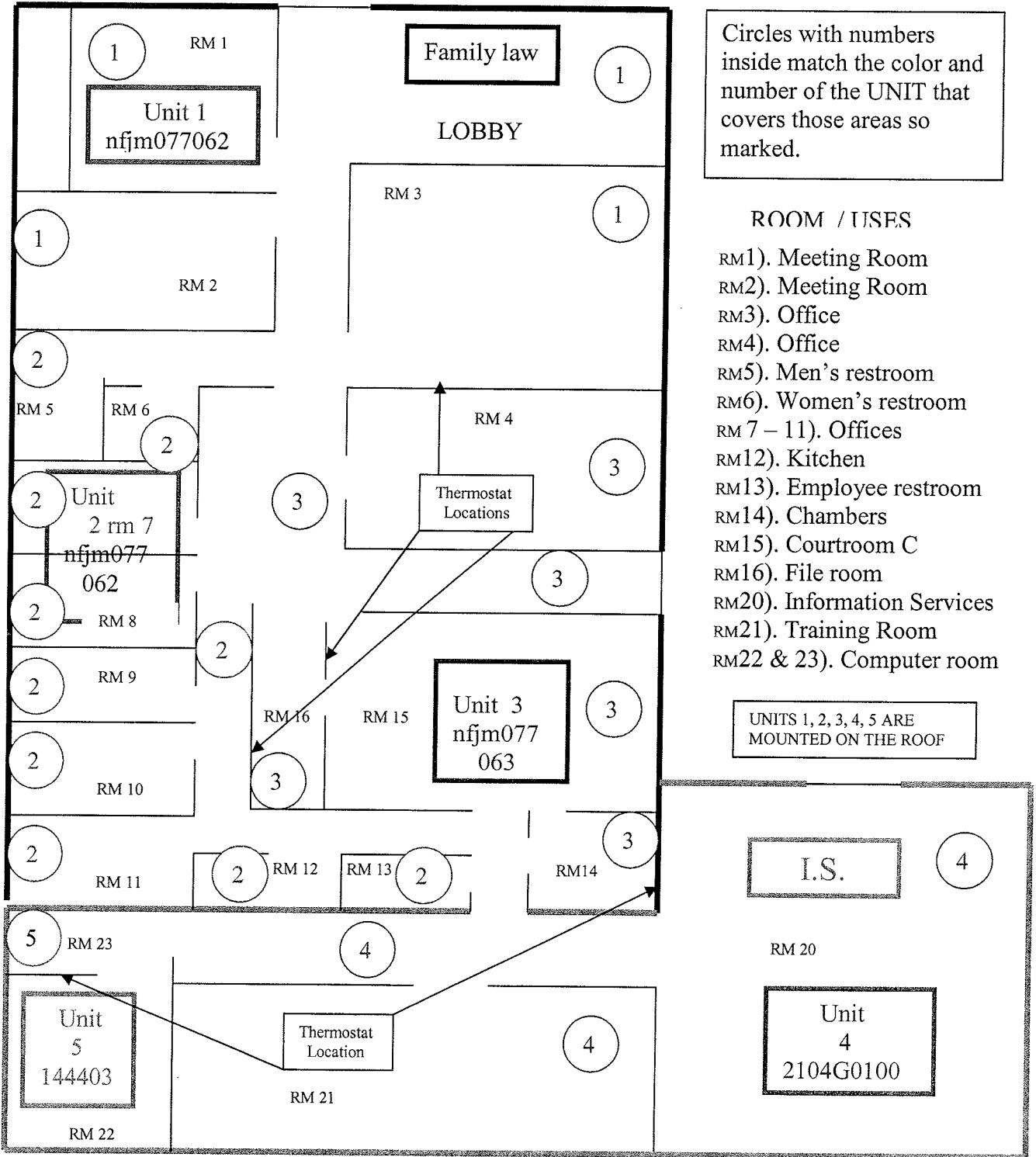
www.wmmt.com

COMMERCIAL REAL ESTATE BROKERAGE AND DEVELOPMENT

The information contained in this offering was provided from sources deemed to be reliable however Broker or owner makes no representations or warranties of any kind, expressed or implied, regarding the physical condition, zoning classification, physical characteristics such as square footage, adequacy of electrical service or other utilities, building habitability or fitness, compliance with current building codes such as ADA, seismic, health & safety or any other governmental codes or regulations, structural integrity including water tightness of the roof or any other component of the buildings, environmental

FAMILY LAW I.S. HVAC UNIT LOCATION

Also what areas each unit covers



Circles with numbers inside match the color and number of the UNIT that covers those areas so marked.

ROOM / USES

- RM1). Meeting Room
- RM2). Meeting Room
- RM3). Office
- RM4). Office
- RM5). Men's restroom
- RM6). Women's restroom
- RM 7 – 11). Offices
- RM12). Kitchen
- RM13). Employee restroom
- RM14). Chambers
- RM15). Courtroom C
- RM16). File room
- RM20). Information Services
- RM21). Training Room
- RM22 & 23). Computer room

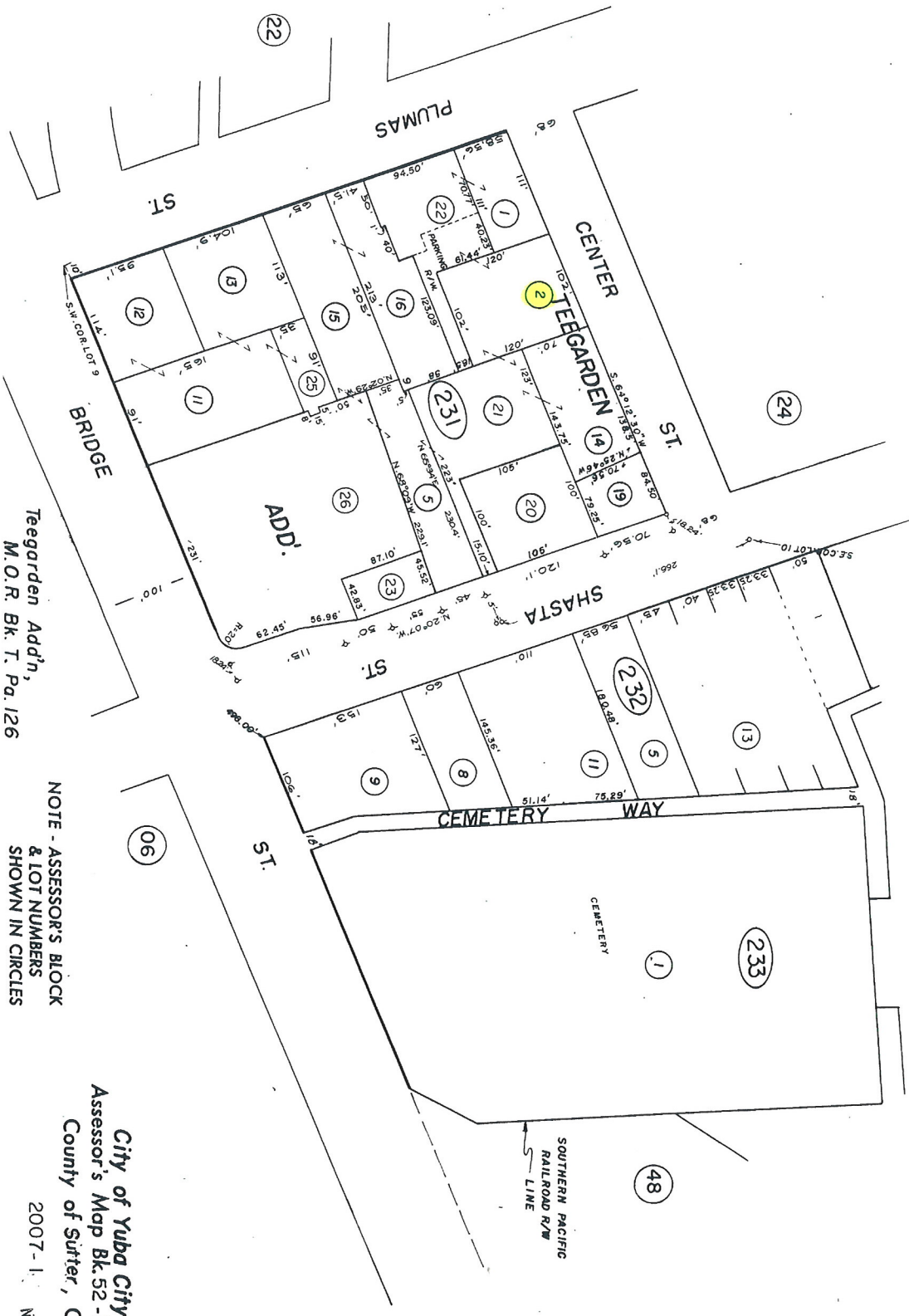
UNITS 1, 2, 3, 4, 5 ARE MOUNTED ON THE ROOF

I.S. 4

RM 20
Unit 4
2104G0100

POR. LOT 38, NEW HELVETIA RANCHO, T.15N. R.3E. M.D.B.&M.

52-23



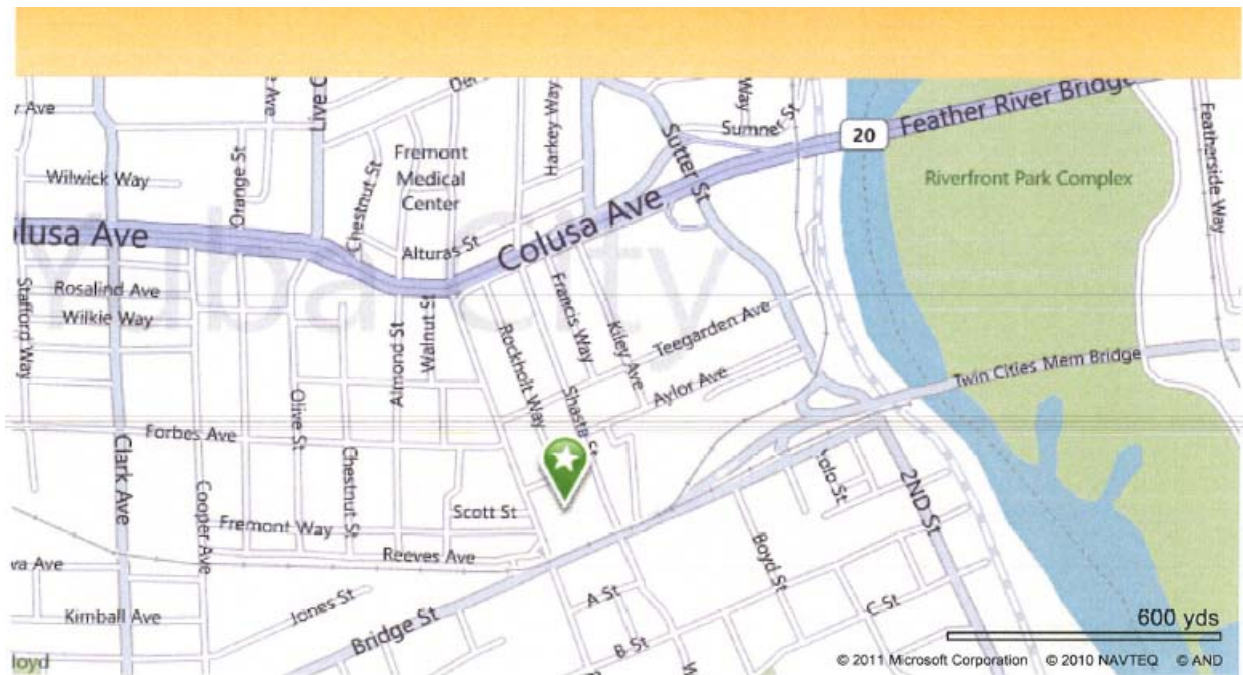
Tegarden Add'n,
M.O.R. Bk. T. Pa. 126

NOTE - ASSESSOR'S BLOCK
& LOT NUMBERS
SHOWN IN CIRCLES

City of Yuba City
Assessor's Map Bk. 52 - Pg. 23
County of Sutter, Calif.

2007-11-16 NOV 26 2007





430 Center St, Yuba City, CA 95991