

**PRIME RETAIL/OFFICE BUILDING
FOR SALE OR LEASE
MARYSVILLE, CA**



Location: 430 C Street, Marysville, CA. The property is situated on the northwest corner of Fifth and C Streets, diagonally across from the Yuba County Courthouse.

Description: The building is a two (2) story, 7500SF ± (6000SF± down). Previous uses were a church, bank (vault still in place), post office, and a general office.

Zoning: C-2, Community Business.

Parking: 30± parking spaces onsite.

Lot Size: 25600SF±

Lease Rate: \$4,950.00/month MG

Comments: Very desirable property in downtown Marysville. Rare onsite parking.

FOR MORE INFORMATION CONTACT:

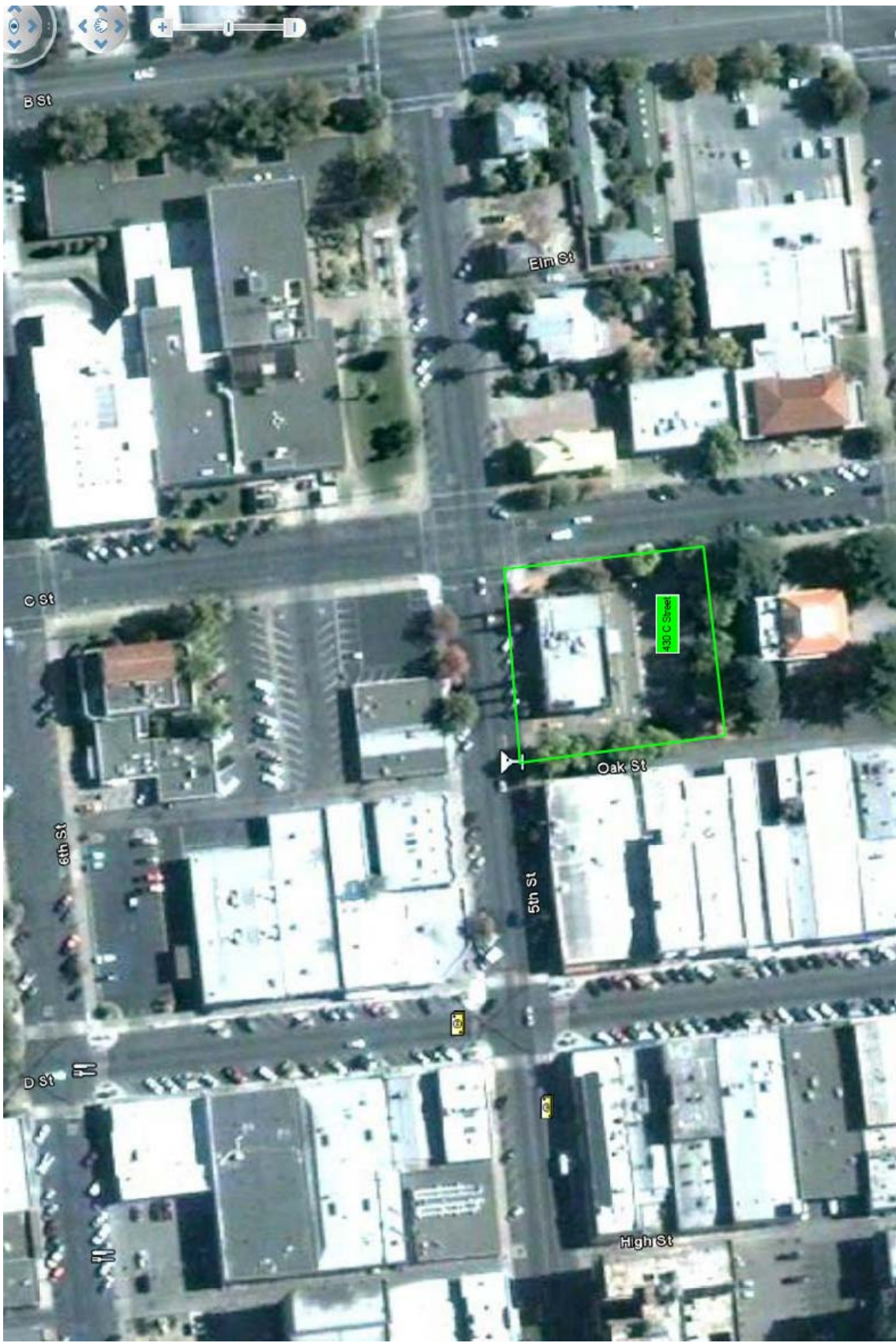
FRED NORTHERN

CA RE LIC#01075027

(530) 671-0000

THE ABOVE INFORMATION WAS FURNISHED BY THE OWNER AND/OR FROM PUBLIC RECORDS, AND IS BELIEVED TO BE RELIABLE, HOWEVER, THIS INFORMATION IS NOT WARRANTED OR GUARANTEED ACCURATE OR CORRECT, AND NO WARRANTY OR GUARANTEE IS EXPRESSED OR IMPLIED. ALL INFORMATION IS SUBJECT TO INDEPENDENT VERIFICATION BY PROSPECTIVE TENANT//BUYERS TO DETERMINE TO TENANTS/BUYERS SATISFACTION THE SUITABILITY OF THE PROPERTY FOR THEIR INTENDED USE.

COMMERCIAL REAL ESTATE BROKERAGE AND DEVELOPMENT



B St

Elm St

C St

430 C Street

6th St

Oak St

5th St

D St

High St

NOTE: This map was prepared for assessment purposes only, and is not intended to illustrate legal building sites or establish precedence over local ordinances. Official information concerning size or use of any parcel should be obtained from recorded documents and local governing agencies.

POR. OLD CITY

Tax Area Code
 01-001 01-014
 01-003 01-015
 01-006 ST.

10-24

430 C Street

