

**VACANT LAND FOR SALE  
NORTH BEALE ROAD  
LINDA, CA  
PRICE REDUCED!!!**



- Location:** 1712-1726 North Beale Road, South side of North Beale Road east of Hammonton-Smartsville Road, Linda, CA.
- Size:** Five (5) lots totaling about 69520sf (1.60 ± acres)
- Zoning:** Commercial and R2.
- Price:** \$5.25/sf “As Is”= \$364,980.00. **\$4.00/sf - \$278,080.00**
- APN’s:** 021-132-025, 026, 027, 028, & 029
- Comments:** Property is well situated with good visibility and access.

**FOR MORE INFORMATION CONTACT:  
FRED NORTHERN  
(530) 671-0000**

THE ABOVE INFORMATION WAS FURNISHED BY THE OWNER AND/OR FROM PUBLIC RECORDS, AND IS BELIEVED TO BE RELIABLE, HOWEVER, THIS INFORMATION IS NOT WARRANTED OR GUARANTEED ACCURATE OR CORRECT, AND NO WARRANTY OR GUARANTEE IS EXPRESSED OR IMPLIED. ALL INFORMATION IS SUBJECT TO INDEPENDENT VERIFICATION BY PROSPECTIVE BUYERS TO DETERMINE TO BUYERS SATISFACTION THE SUITABILITY OF THE PROPERTY FOR THEIR INTENDED USE.

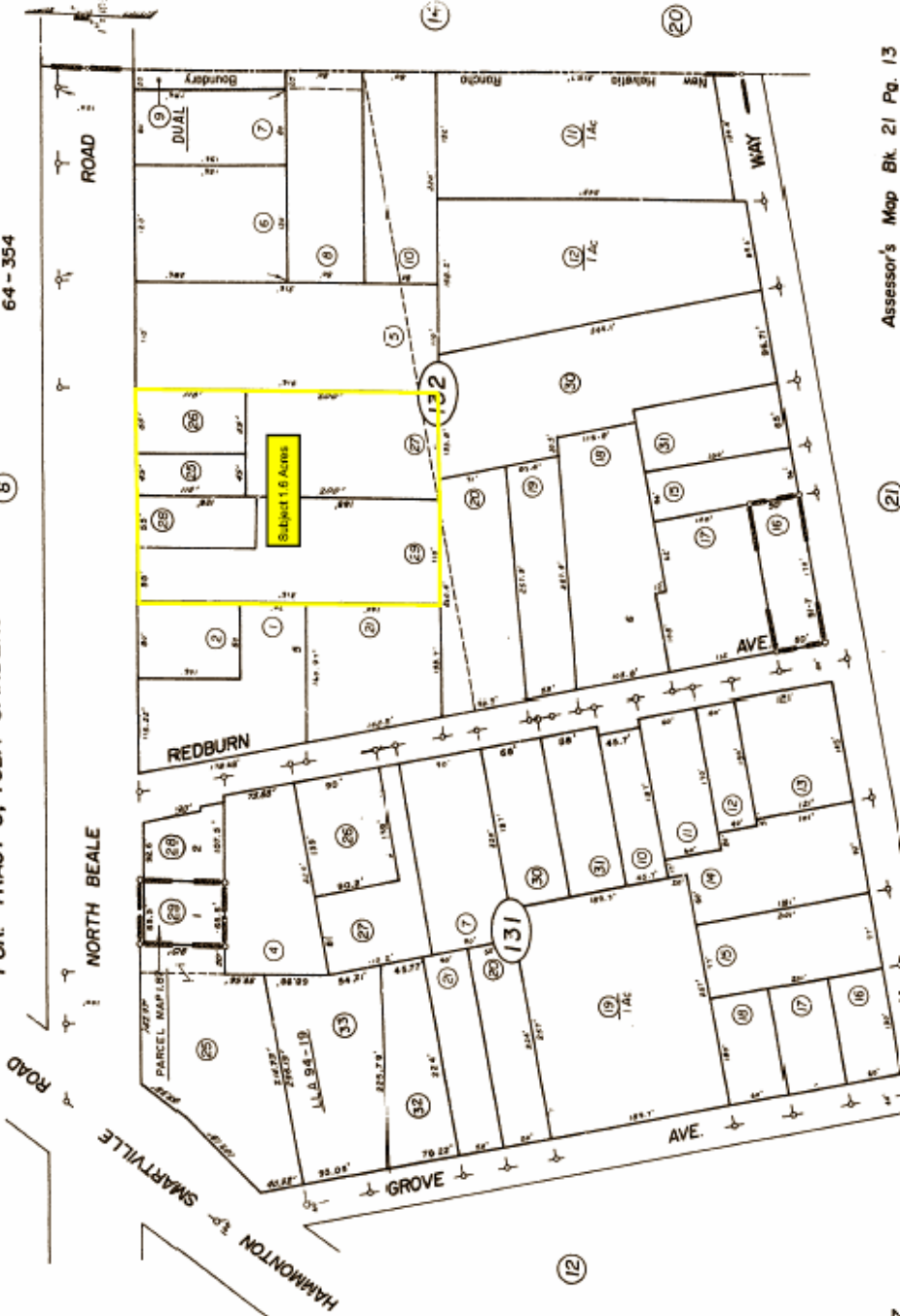
COMMERCIAL REAL ESTATE BROKERAGE AND DEVELOPMENT



21-13

Tax Area Code  
64-354

6 POR. TRACT 3, YUBA GARDENS



Assessor's Map Bk. 21 Pg. 13  
County of Yuba, Calif.

NOTE -- Assessor's Block Numbers Shown in Ellipses.  
Assessor's Parcel Numbers Shown in Circles.

R.S. - Bk. 51, Pg. 7  
R.S. - Bk. 15, Pg. 25 (Parcel Map 1, 87)  
R.S. - Bk. 3, Pg. 2 (Yuba Gardens)  
R.S. - Bk. 3, Pg. 8 (Resub. Tr. 3) (L.L.A. 94-19) s.w. cor. Lot 6  
CDDMAP, a product of BIT INCORPORATED