

OFFICE/WAREHOUSE
1624 POOLE BOULEVARD
YUBA CITY, CA
FOR SALE



Location: 1624 Poole Boulevard just west of Stabler Lane, north of Colusa Avenue (Highway 20), Yuba City, CA. The property is situated in a nicely located light industrial area.

Building Size: 7,206 SF ± (2,000SF± office & 5,206SF± warehouse).

Lot Size: About 0.5 acre (21,780sf ±).

Zoning: CM- Heavy Commercial-Light Industrial.

Sales Price: \$479,500.00

Comments: Location, Location, Location!!! Building is very centrally located and very functional. Current tenants are on month to month agreements. Very easy access Come on and grab it!

FOR MORE INFORMATION CONTACT:
FRED NORTHERN
(530) 671-0000 office/ (530) 701-5216 cell
CA RE License #01075027

THE ABOVE INFORMATION WAS FURNISHED BY THE OWNER AND/OR FROM PUBLIC RECORDS, AND IS BELIEVED TO BE RELIABLE, HOWEVER, THIS INFORMATION IS NOT WARRANTED OR GUARANTEED ACCURATE OR CORRECT, AND NO WARRANTY OR GUARANTEE IS EXPRESSED OR IMPLIED. ALL INFORMATION IS SUBJECT TO INDEPENDENT VERIFICATION BY PROSPECTIVE TENANTS/BUYERS TO DETERMINE TO TENANTS/BUYERS SATISFACTION THE SUITABILITY OF THE PROPERTY FOR THEIR INTENDED USE.

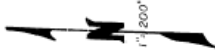
COMMERCIAL REAL ESTATE BROKERAGE AND DEVELOPMENT





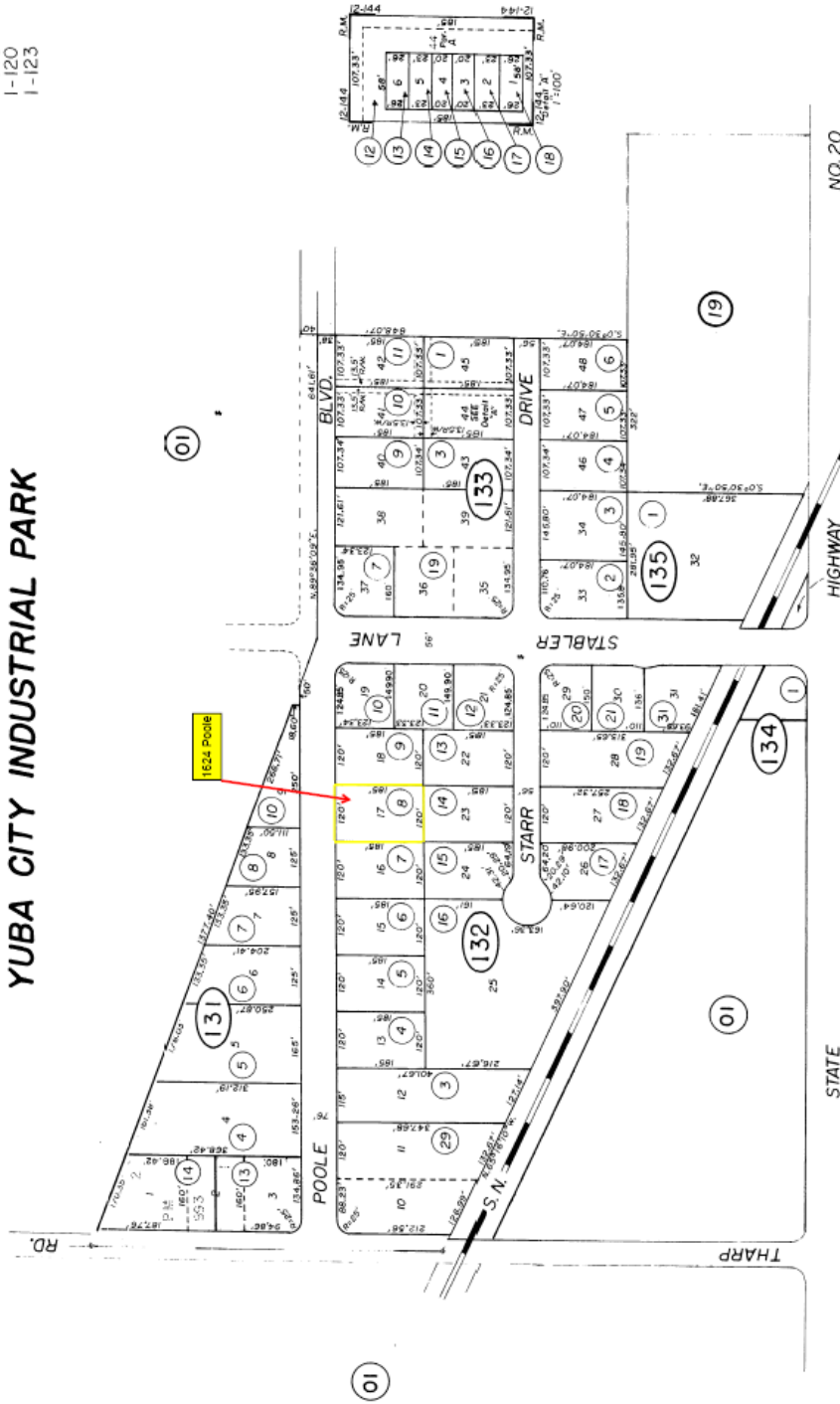
59-13

Tax Area Code
I-011
I-015
I-120
I-123



POR. SEC. 16, T.15N., R.3E., M.D.B. & M.

YUBA CITY INDUSTRIAL PARK



Bk.58

Yuba City Industrial Park, R.M. Bk.12 - Pg.83
Civic Center Plaza No.2, R.M. Bk.12 - Pg.144

NOTE - ASSESSOR'S BLOCK
& LOT NUMBERS
SHOWN IN CIRCLES

City of Yuba City

Assessor's Map Bk.59-Pg.13
County of Sutter, Calif.

2002-1

DATE