

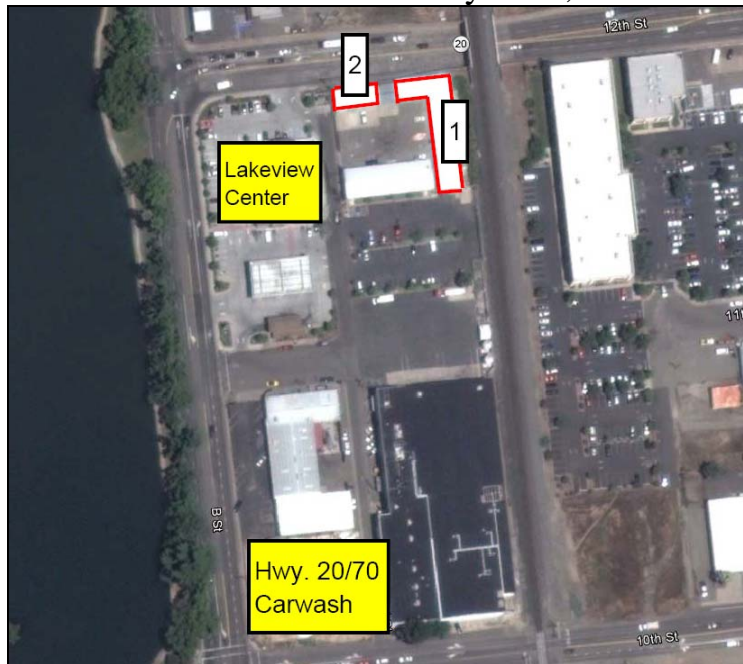
AVAILABLE

5,100 Sq. Ft. Shop/Warehouse

And

1,400 Sq. Ft. Shop/Warehouse

1127 Chestnut St. Marysville, CA



- Great location on Hwy. 20 by Ellis Lake. Large shared secure yard space. Very functional shop/warehouse.
- Shop #1 (5,100sf) has lighting, roll-ups, restroom, office, ventilation fan and sprinklers.
- Shop #2 (1,400sf) has lighting, large roll-up and sliding door, office, shared restroom.
- Asking \$0.35 per sq. ft. per month Modified Gross.

Please Contact:

Zac Repka

DRE Lic. #01451649

(530)671-0000 ext. 14 / zac@wmmt.com

The information contained in this offering was provided from sources deemed to be reliable however Broker makes no representations or warranties of any kind, expressed or implied, regarding the physical condition, zoning classification, physical characteristics such as square footage, adequacy of electrical service or other utilities, building habitability or fitness, compliance with current building codes such as ADA, seismic, health & safety or any other governmental codes or regulations, structural integrity including water tightness of the roof or any other component of the buildings, environmental matters, income/expense information or any other aspect of the property or the buildings thereon. Prospective Buyers or Tenants shall be solely responsible for determining the suitability of the property and its condition for their intended use.

COMMERCIAL REAL ESTATE BROKERAGE AND DEVELOPMENT